



# Asset Security + Recovery



LOCATE AND MONITOR ASSETS AND VEHICLES WITH DISCRETE TRACKING. RECEIVE ALERTS FOR UNUSUAL ACTIVITY AND DISABLE VEHICLES OR MACHINERY REMOTELY.

Locating your vehicles, machinery, equipment or tools when you need them is critical to running your business efficiently. But losing assets or theft can cost you capital, time, productivity and revenue. **Blackhawk solves both problems;** enabling you to locate assets when you need them and providing a range of solutions to help you secure and recover any asset.

**FEATURE****BENEFIT**

Track and manage any asset with a range of options to suit any need or any budget.

Manage all your assets in one system. Use the right device with the right IoT network to match your assets, including concealed installation.

Flexible reporting from once-daily check-ins to real-time tracking and alerts.

Secure assets and machinery against theft or unauthorised use - recover your valuable resources.

Automatically verify asset status, location, chain-of-custody, and compliance.

Reach a constant state of situational awareness; know where all your asset are at any given moment.

Best-of-breed, durable, reliable and smart/flexible devices sourced from the best device manufacturers.

Provides future-proof reliability, flexibility and return on investment. Best of all; devices are upgradable and transferable so you can start with a good option and upgrade to a better one when you want to increase value.

# Why protect your assets and vehicles?

Crime statistics show a worrying trend of increasing thefts. According to AA Insurance, **vehicle thefts are up 36.5 percent** in 2022 across New Zealand. RNZ reports “retail crime rates have been on the rise for the past four years. Reports of theft dropped slightly in 2020, which could be linked to strict Covid-19 lockdowns during that year, but overall have been skyrocketing with thousands more cases recorded between 2020 and 2021, and then 2021 to 2022”.

Now thieves seem to be increasingly **targeting tools, machinery, and heavy equipment** with a spate of incidents across the country.

## IN THE NEWS...



**NORTHLAND DIGGER THIEVES CAUGHT IN THE ACT THANKS TO TECHNOLOGY**

[RNZ →](#)



**POLICE OPERATION RECOVERS 3000 STOLEN ITEMS INCLUDING POWER TOOLS, E-SCOOTERS, HEAT PUMPS**

[NZ HERALD →](#)



**PORTALOO THEFT LEADS HAWKE'S BAY POLICE TO THOUSANDS OF DOLLARS OF STOLEN GOODS**

[NZ HERALD →](#)



**CONSTRUCTION SITE RAIDS: BUILDERS RESORT TO SLEEPING ON-SITE TO DETER BRAZEN THIEVES**

[NZ HERALD →](#)



**STOLEN GENERATORS - RECOVERED!**

[HONDA OUTDOORS →](#)



**SPARK BOSS ON SPATE OF FIVE STOLEN GENERATORS, DIRECT FINANCIAL COST OF CYCLONE GABRIELLE**

[NZ HERALD →](#)

# Delivering real, measurable return on investment

**01****PROVEN RECOVERY OF STOLEN TOOLS AND EQUIPMENT**

WE HELPED A SINGLE CUSTOMER RECOVER FOUR STOLEN GENERATORS IN ONE MONTH ALONE.

**02****ACCURATE LOCATION AND MANAGEMENT OF ASSET INVENTORY**

FIND ASSETS QUICKLY AND KNOW WHERE YOUR ASSETS ARE AT ANY TIME.

**03****PROOF-OF-SERVICE / BILLING EVIDENCE**

NO MORE ARGUING OVER WHAT WAS USED AND WHERE.

**04****DIGITAL PRE-HIRE AND POST-HIRE REPORTS**

TRACK ASSET CONDITION, KNOW WHEN DAMAGE WAS CAUSED, BY WHOM AND PROVIDE EVIDENCE TO BACKUP DAMAGE CHARGES.

**05****PROACTIVE MAINTENANCE MANAGEMENT**

AUTOMATIC SERVICE REMINDERS AND SCHEDULES BASED ON INTERVAL AND RUNTIME LEADING TO INCREASED UPTIME AND RELIABILITY.

**06****WHITE-LABEL TELEMATICS**

PROVIDE CUSTOMERS WITH YOUR OWN BRANDED TELEMATICS SERVICE. SERVE THEM VALUE-ADDED LOCATION, UTILISATION AND ACTIVITY REPORTING.

# Digital inventory

Create and maintain an up-to-date digital asset register. Track and manage vehicles and assets via QR tags, Bluetooth beacons and mobile devices.



SCAN QR CODES TO RECORD LOCATION, DATE, TIME & USER ID



INSPECT ASSETS, MAINTAIN PHOTO LOGS, AUDIT AND VERIFY WHERE ASSETS ARE AND WHO IS USING THEM



MAINTAIN CHAIN-OF-CUSTODY AND EVIDENCE OF LAST KNOWN LOCATION



SUPPORT AUDITING FOR INSURANCE AND/OR FINANCE VERIFICATION

# Any vehicle or asset

Blackhawk provides a range of fit-for-purpose solutions to monitor any asset.

From QR codes, to battery-powered tracking devices, GPS telemetry and remote immobilisation solutions; we have a mix of solutions to enable you to manage everything in one place.



- Fleet vehicles and trucks
- Light commercial vehicles
- Motorcycles and scooters
- Electric and hybrid vehicles
- Heavy equipment and machinery
- Light equipment, powered plant and tools
- Hire equipment
- Boats and marine-craft
- Bins and returnables
- Office equipment, medical equipment, education equipment...
- Any kind of asset!

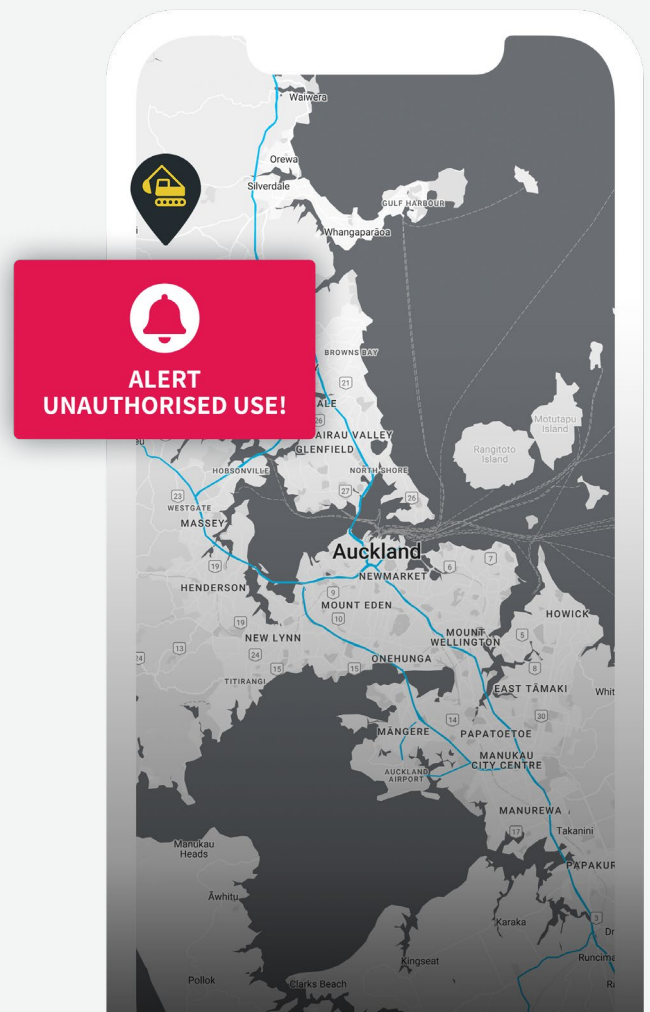
# Battery powered tracking

Our range of rugged, compact, indoor/outdoor battery-powered tracking devices can cover almost any requirement. With over-the-air configuration these devices can be set to check-in daily and provide “deploy-once” battery life (5-10 years) and can be remotely updated to provide movement alerts and tracking. Easy to install yourself, and in a selection of sizes and capabilities these devices are ideal for unpowered assets or hidden monitoring.



# Unauthorised movement alerts and recovery mode

Our range of rugged, compact, indoor/outdoor battery-powered tracking devices can cover almost any requirement. With over-the-air configuration these devices can be set to check-in daily and provide “deploy-once” battery life (5-10 years) and can be remotely updated to provide movement alerts and tracking. Easy to install yourself, and in a selection of sizes and capabilities these devices are ideal for unpowered assets or hidden monitoring.



# Powered equipment monitoring

Blackhawk provides a range of fit-for-purpose solutions to monitor any asset. From QR codes, to battery-powered tracking devices, GPS telemetry and remote immobilisation solutions; we have a mix of solutions to enable you to manage everything in one place.



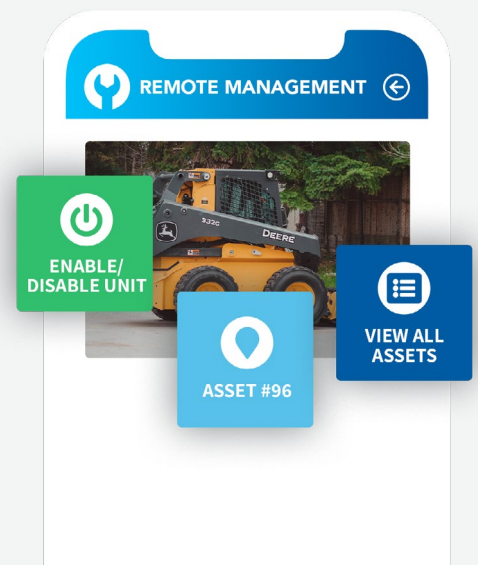
# Vehicle tracking

Depending on your vehicle tracking needs, Blackhawk's range of solutions can fulfil almost any requirement or budget. From simple battery-powered tracking to full telematics, driver safety alerts and remote immobilisation. Our solutions can connect almost any vehicle; cars, trucks, motorcycles, ATVs and any power type from petrol to diesel, hybrid or electric.



# Asset immobilisation

For the ultimate in vehicle and asset security we offer remote disable (immobilisation). Using a starter isolation device, a command can be sent via a website or mobile app to immobilise the asset's starter mechanism. Another command can be sent to re-enable the starter remotely. Smart-safety features ensure that the vehicle or asset is not disabled while in use. And immobilisation can be triggered in combination with a time schedule or at a known location.





# Device Range

## ALL ASSETS

**FIT-FOR-PURPOSE QR TAGGING SYSTEM** Use rugged, all-weather QR code tags to identify assets and ensure accuracy for maintenance and scheduling. Industrial QR code asset ID tags available for a complete range of items.

IPXX LINK

## ASSET INVENTORY

**BLUETOOTH BEACONS** Tag large numbers of assets for inventory management. Keep tabs on location and movement via proximity to BLE readers. Rugged BLE proximity beacons and sensors. Long battery-life, cost effective and simple to install.

BATT BLE IPXX

## STORAGE/SITES/LOCATIONS

**BATTERY: ULTRA LONG-LIFE** Shipping Containers. Portable buildings or site offices. Trailers. Boats. Ideal for assets that need extra long battery life - up to 10 years. Doubles as a BLE gateway.

BATT GPS IPXX MOVE BLE

## SMALL EQUIPMENT/LIGHT TRAILERS

**BATTERY: LONG-LIFE, COMPACT** Portable toilets. Bins. Light trailers. Light equipment and machinery. A balance of size and battery life for a wide range of applications.

BATT GPS IPXX MOVE

## TOOLS/MATERIALS HANDLING

**BATTERY: ULTRA COMPACT** Tools. Pallets. Returnables. Packages. Bags. Scissor lifts. Materials handling. Compact, rugged and capable of hybrid indoor and outdoor location tracking.

BATT LBS IPXX MOVE

## LIGHT COMMERCIAL VEHICLES

**PLUG-IN: ENGINE TELEMATICS** Utes. SUVs. Vans. Passenger vehicles. Light trucks. Easy to install, fully featured tracking for a range of OBDII-equipped vehicles.

OBD GPS MOVE IGN HOURS FUEL

## MACHINERY/EQUIPMENT/POWERED PLANT

**EASY HOUR-METER** Any powered asset you want to get condition monitoring and security tracking on. Self-installable engine runtime monitor for proactive maintenance management. Provides location updates.

GPS MOVE IGN HOURS IPXX BLE

## LIGHT MACHINERY/POWERED PLANT

**WIRED: EQUIPMENT RUNTIME** Light excavators. Skid steers. Fork hoists. Motorcycles and ATVs. Pumps, generators and other assets. Rugged GPS tracker with working time and runtime for maintenance. Discrete installation.

GPS IPXX MOVE IGN HOURS I/O

## YELLOW IRON/HEAVY PLANT AND MACHINERY



**WIRED: ENGINE TELEMATICS** Earthmoving machinery. Off-road trucks. Tractors. Forestry equipment. Real-time engine (CANbus) telematics with extendable modules for fuel monitoring and maintenance KPIs.

GPS IPXX MOVE IGN HOURS FUEL I/O



# Device Range

## FEATURES EXPLAINED

	<b>BATT</b>	<b>LONG-LIFE BATTERY</b> Industrial-grade battery provides 5-10 years (deploy-once battery-life) in Daily Check-in mode. Capable of 2-3 years in Movement Tracking mode (results vary). Some devices draw power from the asset battery but feature a back-up battery for added security or long-duration storage check-in.
	<b>GPS</b>	<b>GLOBAL POSITIONING SYSTEM</b> Industry standard for positioning and location tracking. Ideal for powered devices as GPS consumes higher levels of power than other positioning technologies. Also, highly effective in battery-powered devices which are primarily deployed outdoors. Typical accuracy within 20 meters.
	<b>LBS</b>	<b>LOCATION-BASED SERVICES</b> Range of new-generation positioning methods, including WiFi position look-ups. GNSS cloud-based resolving and cellular signal triangulation. LBS methods do not need line-of-sight to GPS satellites meaning indoor / outdoor use and hidden device installation is supported. LBS is also more battery-efficient than GPS. Typical accuracy within 30 meters.
	<b>IPXX</b>	<b>RUGGED/ALL WEATHER</b> IP67 is a waterproofing and dust ingress standard indicating the industry standard for rugged, all-weather outdoor capability. This means the device is fit-for-purpose in extended outdoor operations. The device can also tolerate power-washing so ideal in dirty and wet conditions.
	<b>OBD</b>	<b>ON-BOARD DIAGNOSTICS</b> OBD-II is the standard vehicle computer diagnostics port in many vehicles. Plugging into the OBD port means the telematics device can be easily self-installed and provides extensive features such as engine status, speed, odometer readings and some engine metrics such as lifetime hours, fuel levels and fault warning codes.
	<b>MOVE</b>	<b>MOVEMENT DETECTION</b> Device features an onboard accelerometer to detect movement. This allows the device to report activity (trip) start and end. It can also be configured to provide runtime hours reporting on powered assets, or activity duration reporting on non-powered assets as a movement sensor, without the need for a wired installation. Can also identify high G-force impact events.
	<b>IGN</b>	<b>VEHICLE/EQUIPMENT IGNITION STATUS</b> Device is wired into the asset engine ignition system for both power and engine on/off status reporting. This allows reporting of key performance indicators such as vehicle state, trip/activity time, engine runtime, operational time-on-site and productivity reporting.
	<b>HOURS</b>	<b>ENGINE RUNTIME HOURS</b> Device either supports runtime monitoring or CANbus integration. This allows for retrieval and reporting of critical engine KPI's such as lifetime hours, fuel level, RPM, temperatures and fault warning codes. The level of information available can vary per asset manufacturer make and model.
	<b>FUEL</b>	<b>FUEL MONITORING</b> Device supports fuel level and fuel use monitoring either via means of a CANbus interface or dedicated fuel flow meter. This allows reporting on fuel usage and consumption rate for cost management. Also provides for fuel level monitoring for on time operational awareness of assets that require refueling.
	<b>I/O</b>	<b>INPUT/OUTPUT CONNECTIONS</b> Supports extensible hardware options such as driver identification, sensors or power take-off (PTO). Allows for additional data capture (e.g "temperature") or granular status events such as "pumping", "door open", "loading" or "unloading".
	<b>BLE</b>	<b>BLUETOOTH LOW ENERGY</b> Device either acts as a beacon (BLE pulse emitter) or a gateway (BLE reader). Beacons can theoretically be read by gateways up to 200 meters away, but real-world range is approximately 50 meters. Provides proximity-based location tracking of large volumes of assets with a low-cost connection. Can also provide wireless sensor relay such as temperature or movement.
	<b>LINK</b>	<b>WEB-ENABLED QR LINK</b> QR (Quick Reader) code with GUID (Globally Unique Identifier) 128-bit secure ID and web-link. Enables any user to connect to an asset-specific webpage, forms and services. Can be used for asset inventory (location, photos, chain-of-custody), maintenance inspections, breakdown reporting, service requests and much more. Can be scanned by any smartphone or tablet and enables ease of service engagement and user self-onboarding portal.

## About Blackhawk

Blackhawk enables real, measurable digital transformation. We connect machines, vehicles and assets to service teams, operational teams, and your customers through a combination of IoT devices, managed SaaS and smartphone applications, creating transformative customer engagement, service excellence and increased revenue. Since 2005, Blackhawk has enabled businesses and financiers to track and manage their vehicles and assets. We work with New Zealand's largest enterprises, including Spark IoT, to deliver branded and managed SaaS systems that are both trusted and proven. Talk to us about your goals and allow Blackhawk to show your business how you can achieve real transformation.